



# SURGICAL TAPE Series

ALCARE SURGICAL TAPE Series provide the optimum fit and fixing for each purpose and location.



ELATEX



ELATEX-S



SILKYTEX-H



SILKYTEX



SILKYTEX-E



SILKYPORE-H



SILKYPORE



SILKYPORE-E



DERMAPORE

# ALCARE

ALCARE Co., Ltd.  
INTERNATIONAL SALES DIVISION

19F, Arcacentral Bldg.  
1-2-1 Kinshi, Sumida-ku  
Tokyo 130-0013, Japan  
TEL:81-3-5611-7819  
FAX:81-3-5611-7827  
<http://www.alcare.co.jp/e>

Printed in China  
Sep 2007

# ALCARE

SURGICAL TAPE Series  
SURGICAL TAPE Series  
SURGICAL TAPE Series

# Select the appropriate surgical tape according to the purpose and location of use. ALCARE provides a wide variety of surgical tapes to ensure the highest-quality care for patients.

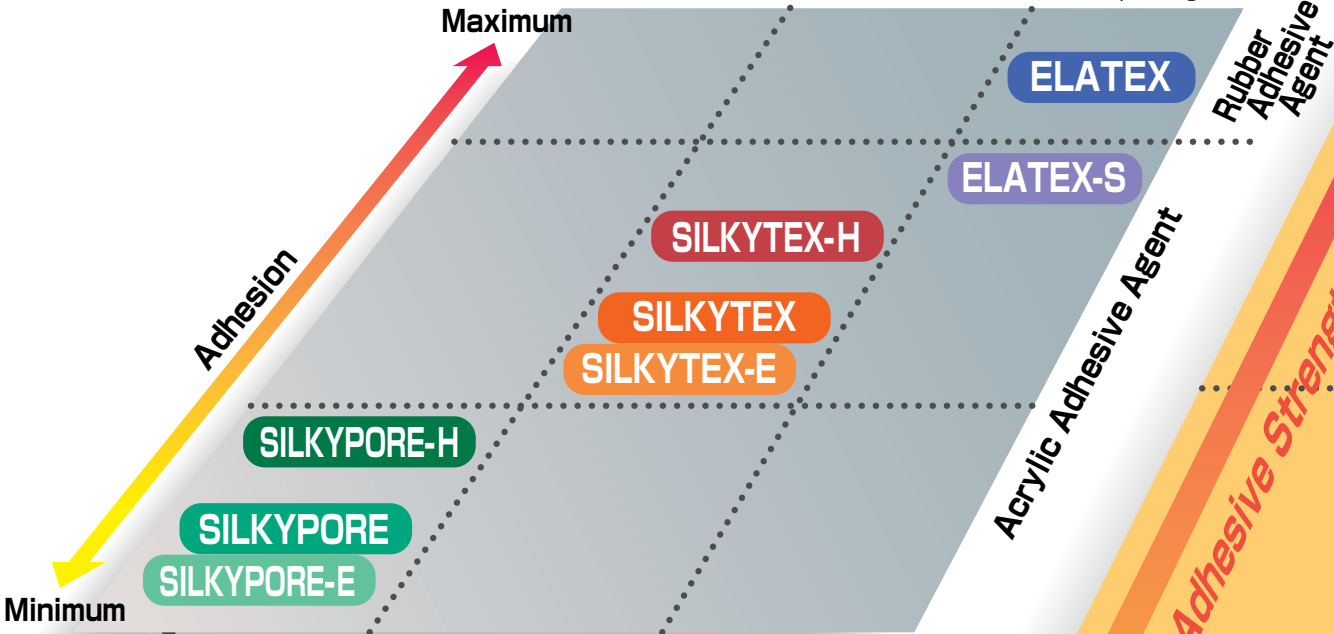
The adhesion strength and flexibility must be considered carefully depending on the purpose and location when selecting the right surgical tape. ALCARE provides a large variety of high-quality surgical tapes to meet customers' needs. Select an appropriate surgical tape to suit each purpose for optimum care.

## Characteristics, Purposes and Application Location of Surgical Tapes

### Characteristics of Surgical Tapes

#### Types of Base Fabric

- Silky-feel mesh non-woven fabric
- Fabric which stretches in accordance with the skin movement
- Elastic fabric for appropriately compressing the wound



The characteristics of surgical tapes depend on the adhesive strength and flexibility of the base fabric. ALCARE SURGICAL TAPE Series offer a large variety of surgical tapes characterized by graded adhesive strength ranging from low adhesive strength with minimum peeling irritation, to high adhesive strength for prolonged application. Regarding flexibility, three types of base fabric are available: a mesh non-woven fabric which fits the skin perfectly, a fabric which stretches in accordance with the skin movement, and an elastic fabric which maintains appropriate compression.

The adhesive strength required for each surgical tape depends on the purpose. If the surgical tapes must be frequently exchanged, select a surgical tape with a low adhesive strength which will cause minimum peeling irritation. If prolonged application is required, select a surgical tape with high adhesive strength. If surgical tapes are used for treatment of frequently moving joints or sebaceous faces, they may peel off easily, so a surgical tape with high adhesive strength is recommended. High-quality care can be provided by selecting an appropriate tape for each purpose and location.



SURGICAL TAPE SERIES

# The philosophy of ALCARE surgical tapes is outstanding care for the patient characterized by multiple functions and high quality.

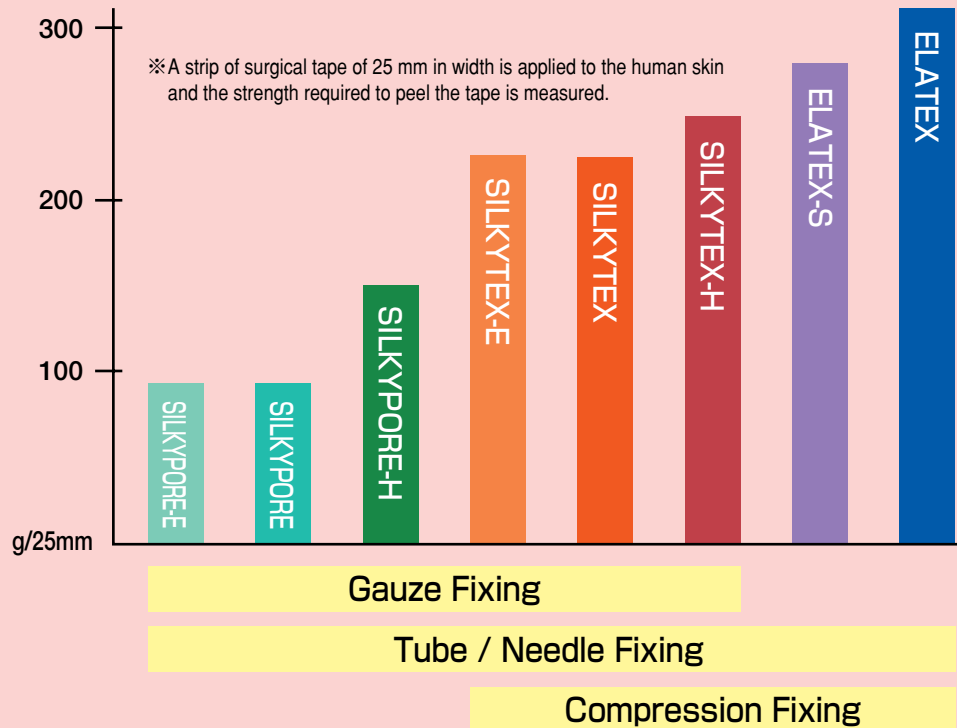
Outstanding care for the patient is the core principle in the development of all ALCARE surgical tapes characterized by multiple functions and top quality. Our surgical tapes are designed to have graded adhesive strength, cause minimum skin irritation and ensure sufficient permeability.

ALCARE attaches high priority to the patients' conditions and provides high-quality care products.

## From gauze fixing to compression fixing with surgical tapes of graded adhesive strength

ALCARE SURGICAL TAPE Series have graded adhesive strength to suit a broad range of purposes and locations.

■ Comparison of adhesive properties by the peel test



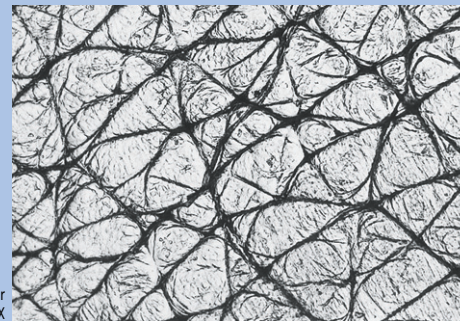
Normal skin surface

## Skin-friendly surgical tapes causing minimum skin irritation

Skin irritation caused by the application of surgical tapes should be minimized. ALCARE makes constant efforts to develop skin-friendly adhesive agents which cause minimum skin irritation.

The following good results were obtained in the skin patch test recommended by the Japanese Society for Cutaneous Health.

- SILKYTEX.....Negative
- SILKYPOR-E...Almost negative
- ELATEX.....Almost negative

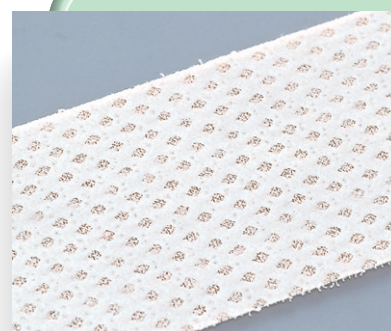


Skin surface after removal of SILKYTEX

■ Criteria for evaluation of the skin patch test results

Method of evaluation	Microscopic evaluation				Macroscopic evaluation
Changes of skin surface	Deepening of skin furrows (inverted skin furrows)				Erythema/edema
Criteria for evaluation	Number of subjects [(20 persons) - (number of persons adversely affected by the control sample)]				n ≥ 1
	n=0	n=1-2	n=3	n ≥ 4	
Judgment	Negative	Almost negative	Almost positive	Positive	Positive

※ Because a hypo-allergenic property is indispensable for surgical tapes, their skin irritability should be evaluated by microscopic observation of subtle changes of skin conditions. The Japanese Society for Cutaneous Health has established a skin patch test (Kawai's Method) to macroscopically and microscopically observe the changes of skin conditions. In this method, the test surgical tape and the control sample are applied to the skin of 20 healthy volunteers. The healthy skin surface consists of deltas surrounded by clear linear furrows. When the skin surface is irritated, the furrows become deeper and the deltas are deformed. The changes of skin conditions are carefully observed, and the irritability of the tape is determined according to the number of subjects who show adverse reactions. This skin patch test is considered the most effective way to evaluate skin irritation at present. The criteria for evaluation are summarized in the following table.



The ELATEX lining with rubber adhesive agent does not impede skin respiration thanks to its unique pattern application.

## Excellent permeability for comfortable fitting

ALCARE's unique technique ensures sufficient permeability of the SURGICAL TAPE Series. These surgical tapes are effective for prolonged application and do not hinder sweating or skin respiration.

Surgical tapes lined with the acrylic adhesive agent have micropores for permeability all over the surface to which the adhesive agent is applied, to ensure perfect permeability.



## Easy-to-use surgical tapes with multiple functions

Environment-friendly new package made of recycled paper

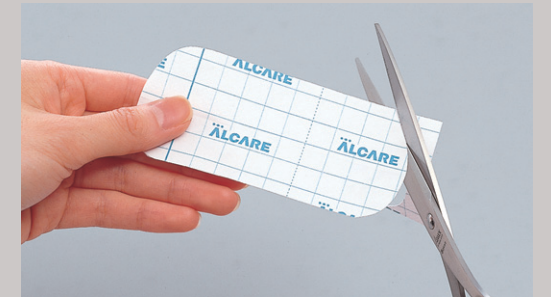
Easy-to-use compact new package. The new compact package made of recycled paper reflects ALCARE's commitment to environmental protection.



※ SILKYTEX-E and SILKYPOR-E are packed in ordinary paper boxes.

Surgical tape lined with backing paper ruled into 1 cm squares for easy cutting

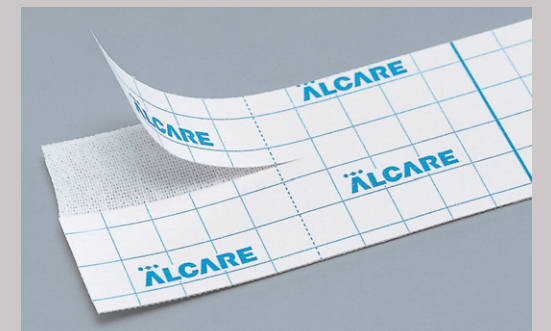
The backing paper ruled into 1 cm squares makes it easy to cut the surgical tape into complicated shapes for tube fixing.



※ SILKYTEX-E and SILKYPOR-E are lined with backing paper without 1 cm squares.

Surgical tape lined with backing paper with split liner for easy handling

ALCARE has included a split liner for the backing paper so that the surgical tape can be easily handled without touching the adhesive surface.



※ ELATEX and ELATEX-S are lined with backing paper without split liners.

# ALCARE seeks patient-friendly high-quality care by providing ideal surgical tapes for appropriate fixing.

## Elastic Surgical Tapes

### ELATEX Series

Surgical tape of 100% tightly twisted cotton with high adhesive strength. Remarkable elasticity and adhesive strength fit for compression fixing.



#### ELATEX ●Elastic Adhesive Bandage

- Rubber adhesive agent causes minimum skin irritation and achieves appropriate fixing.
- Unique adhesive application technique ensures excellent permeability.

#### ELATEX-S ●Elastic Adhesive Bandage

- Bandage with minimum adhesive strength for reducing skin irritation caused by peeling while maintaining sufficient fixing.
- Skin-friendly acrylic adhesive agent is used and the sticky glue rarely remains after removal.

Type	Product CodeNo.	Specification W×L (stretched)	Contents Per Box	Contents Per Pack
3	11881	2.5cm × 5m	2 rolls	6 bxs
4	11882	3.8cm × 5m	2 rolls	4 bxs
5	11883	5.0cm × 5m	1 roll	6 bxs
7	11884	7.5cm × 5m	1 roll	4 bxs
10	11885	10.0cm × 5m	1 roll	3 bxs

\*Pack: Transparent Film Shrink Pack

Type	Product CodeNo.	Specification W×L (stretched)	Contents Per Box	Contents Per Pack
3	15331	2.5cm × 5m	2 rolls	6 bxs
4	15332	3.8cm × 5m	2 rolls	4 bxs
5	15333	5.0cm × 5m	1 roll	6 bxs
7	15334	7.5cm × 5m	1 roll	4 bxs
10	15335	10.0cm × 5m	1 roll	3 bxs

\*Pack: Transparent Film Shrink Pack

### SILKYPORE Series

These skin-friendly bandages use a highly permeable mesh non-woven fabric and acrylic adhesive agent, causing minimum skin irritation. This type of bandage can be easily applied to even elbow-shaped bends for example, because of its good flexibility.



#### SILKYPORE ●Flexible Adhesive Gauze Bandage

- Two colors are available, white and beige. Select an appropriate color according to the purpose and location.



SILKYPORE

Type	Product CodeNo.	Specification W×L (stretched)	Contents Per Box	Contents Per Pack	
White	1	1.25cm × 10m	4 rolls	6 bxs	
	3	11922	2.5cm × 10m	2 rolls	6 bxs
	5	11923	3.8cm × 10m	1 roll	6 bxs
	7	11924	5.0cm × 10m	1 roll	4 bxs
	10	11925	7.5cm × 10m	1 roll	3 bxs
	15	11926	10.0cm × 10m	1 roll	2 bxs
Beige	30	11927	10.0cm × 5m	1 roll	1 box
	3	11931	2.5cm × 10m	2 rolls	6 bxs
	5	11932	5.0cm × 10m	1 roll	6 bxs
	7	11933	7.5cm × 10m	1 roll	4 bxs
10	11934	10.0cm × 10m	1 roll	3 bxs	

\*Pack: Transparent Film Shrink Pack

### SILKYTEX Series

This type of bandage can be used for various purposes because of its excellent flexibility and stable adhesive strength, enabling it to be applied to winding sites.



#### SILKYTEX ●Flexible Adhesive Bandage

- This type of bandage can be used for various purposes ranging from gauze fixing to mild compression fixing.
- Two colors are available, white and beige. Select an appropriate color according to the purpose and location.



SILKYTEX

Type	Product CodeNo.	Specification W×L (stretched)	Contents Per Box	Contents Per Pack	
White	1	11891	1.25cm × 5m	4 rolls	6 bxs
	3	11892	2.5cm × 5m	2 rolls	6 bxs
	4	11893	3.8cm × 5m	2 rolls	4 bxs
	5	11894	5.0cm × 5m	1 roll	6 bxs
	7	11895	7.5cm × 5m	1 roll	4 bxs
	10	11896	10.0cm × 5m	1 roll	3 bxs
Beige	3	11901	2.5cm × 5m	2 rolls	6 bxs
	4	11902	3.8cm × 5m	2 rolls	4 bxs
	5	11903	5.0cm × 5m	1 roll	6 bxs
	7	11904	7.5cm × 5m	1 roll	4 bxs
10	11905	10.0cm × 5m	1 roll	3 bxs	

\*Pack: Transparent Film Shrink Pack

#### SILKYTEX-E ●Flexible Adhesive Bandage

- Only institutional packaging is available. (No compact packaging is available.)



#### SILKYTEX-H ●Flexible Adhesive Bandage

- Bandage with high adhesive strength. Prolonged application causes no peeling or dislocation.
- The adhesive surface has permeable micropores to ensure sufficient permeability.



Type	Product CodeNo.	Specification W×L (stretched)	Contents Per Box	Contents Per Pack
1	15341	1.25cm × 5m	4 rolls	6 bxs
3	15342	2.5cm × 5m	2 rolls	6 bxs
4	15343	3.8cm × 5m	2 rolls	4 bxs
5	15344	5.0cm × 5m	1 roll	6 bxs
7	15345	7.5cm × 5m	1 roll	4 bxs
10	15346	10.0cm × 5m	1 roll	3 bxs

\*Pack: Transparent Film Shrink Pack

Type	Product CodeNo.	Specification W×L (stretched)	Contents Per Box
1	13671	1.25cm × 5m	24 rolls
3	13672	2.5cm × 5m	12 rolls
4	13673	3.8cm × 5m	8 rolls
5	13674	5.0cm × 5m	6 rolls
7	13675	7.5cm × 5m	4 rolls
10	13676	10.0cm × 5m	3 rolls

#### SILKYPORE-H ●Flexible Adhesive Gauze Bandage

- Prolonged application of this bandage causes no peeling or dislocation, due to its high adhesive strength.



Type	Product CodeNo.	Specification W×L (stretched)	Contents Per Box	Contents Per Pack
1	15351	1.25cm × 10m	4 rolls	6 bxs
3	15352	2.5cm × 10m	2 rolls	6 bxs
5	15353	5.0cm × 10m	1 roll	6 bxs
7	15354	7.5cm × 10m	1 roll	4 bxs
10	15355	10.0cm × 10m	1 roll	3 bxs
15	15356	15.0cm × 10m	1 roll	2 bxs
30	15357	30.0cm × 10m	1 roll	1 box

\*Pack: Transparent Film Shrink Pack

#### SILKYPORE-E ●Flexible Adhesive Gauze Bandage

- Only institutional packaging is available. (No compact packaging is available.)



Type	Product CodeNo.	Specification W×L (stretched)	Contents Per Box
3	13881	2.5cm × 10m	12 rolls
5	13882	5.0cm × 10m	6 rolls
7	13883	7.5cm × 10m	4 rolls
10	13884	10.0cm × 10m	3 rolls

### Air-permeable waterproof bandage for preventing contamination by water or bacteria.



#### DERMAPORE ●Air Permeable Waterproof Elastic Adhesive Bandage

- This air-permeable waterproof bandage prevents the wound from being contaminated by moisture or foreign matter.
- The contamination condition of the gauze or pad can be confirmed through the translucent bandage.
- The thin bandage which stretches in all directions closely fits uneven surfaces.

Type	Product CodeNo.	Specification W×L (stretched)	Contents Per Box
3	11951	2.5cm × 10m	2 rolls
5	11952	5.0cm × 10m	1 roll
7	11953	7.5cm × 10m	1 roll
10	11954	10.0cm × 10m	1 roll



DERMAPORE